

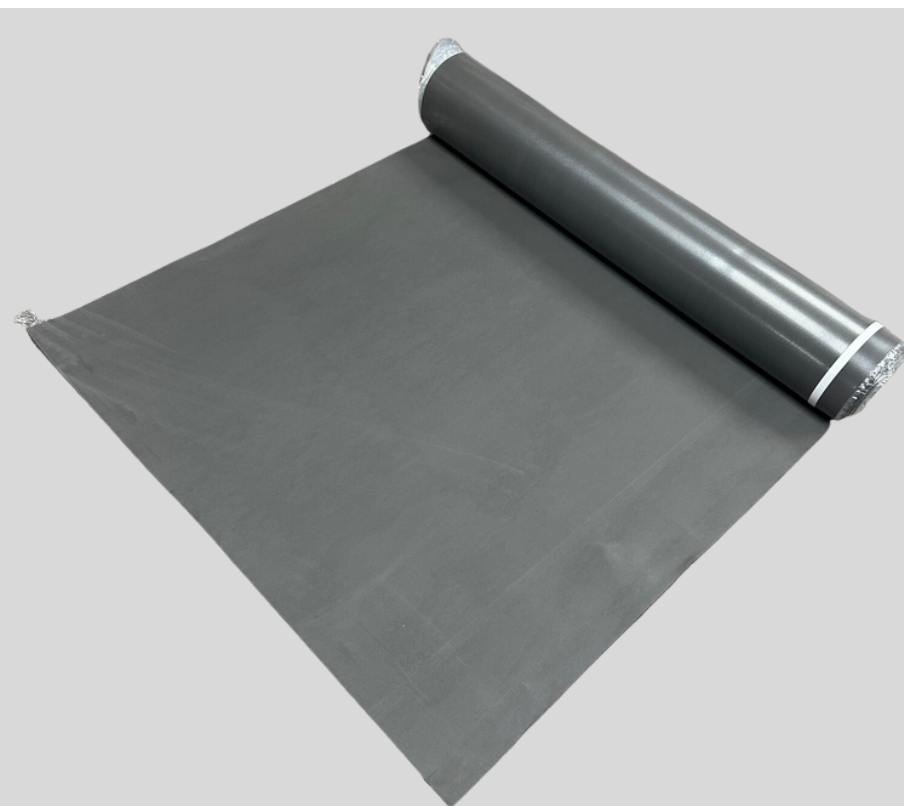


UNIQUE

– WOOD PRODUCTS –

3MM EVA ULTRA PREMIUM UNDERLAYMENT - TRIPLE PROTECTION

The 3mm Ultra Premium underlayment provides superb sound and moisture/vapor protection. This underlayment will absorb minor imperfections in the sub-floor, giving your Laminate Flooring or Engineered Composite a smooth, even surface to float upon.



1

MOISTURE PROOF

PE Film attached vapor barrier and resist moisture

2

SOUND INSULATION

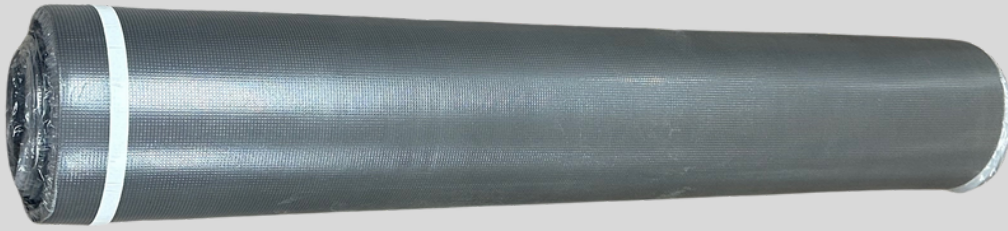
Creates a barrier and helps absorb sound waves

3

THICK 3MM CUSHION

Cushioning foam will absorb some imperfection to help create an even surface.

3MM EVA ULTRA PREMIUM UNDERLAYMENT



	SPECIFICATIONS:
NAME:	ULTRA3MM
COLOR:	BLACK
TYPE:	MOISTURE, VAPOR & CUSHION
CONSTRUCTION:	HIGH DENSITY FOAM AND PE BARRIER FILM
COVERAGE:	APPROXIMATELY 200 SFT
OVERALL THICKNESS:	3MM
WEIGHT PER ROLL:	7LBS
SUBFLOOR COMPATIBILITY:	ALL TYPES
FLOOR COMPATIBILITY:	LAMINATE FLOORING
INSTALLATION METHOD:	FLOATING
RECOMMENDED USAGE:	RESIDENTIAL AND LIGHT COMMERCIAL
DENSITY:	APPROXIMATELY 110KG/M3
NOMINAL ROLL WIDTH:	10 INCHES
NOMINAL ROLL HIEIGHT:	40 INCHES

1. Prepare the Subfloor. Level, repair, and make sure it is free of debris
2. Begin the first row. Place the roll on the ground with the film side down (facing the subfloor). Note: the overlap of film should be positioned toward the open room and the foam will face the wall.
3. Measure and cut accordingly. The plank width will determine how many rows of flooring you will be able to install. When you reach 1ft away from the underlayment, stop and roll out a second row of underlayment.
4. Begin the second row. Unroll, measure, and cut. Place the foam side over the top of the film overlap from the previous row. Butt the edges together to create a nice seam, do not overlap.
5. Tape the Seams. Use industrial tape to adhere the seams together to make a flat & even surface
6. Finish. Continue installation in sections by repeating the steps above.

This product, when properly installed and used under normal conditions, is warranted to remain resilient and functional for a period equal to the flooring installed.